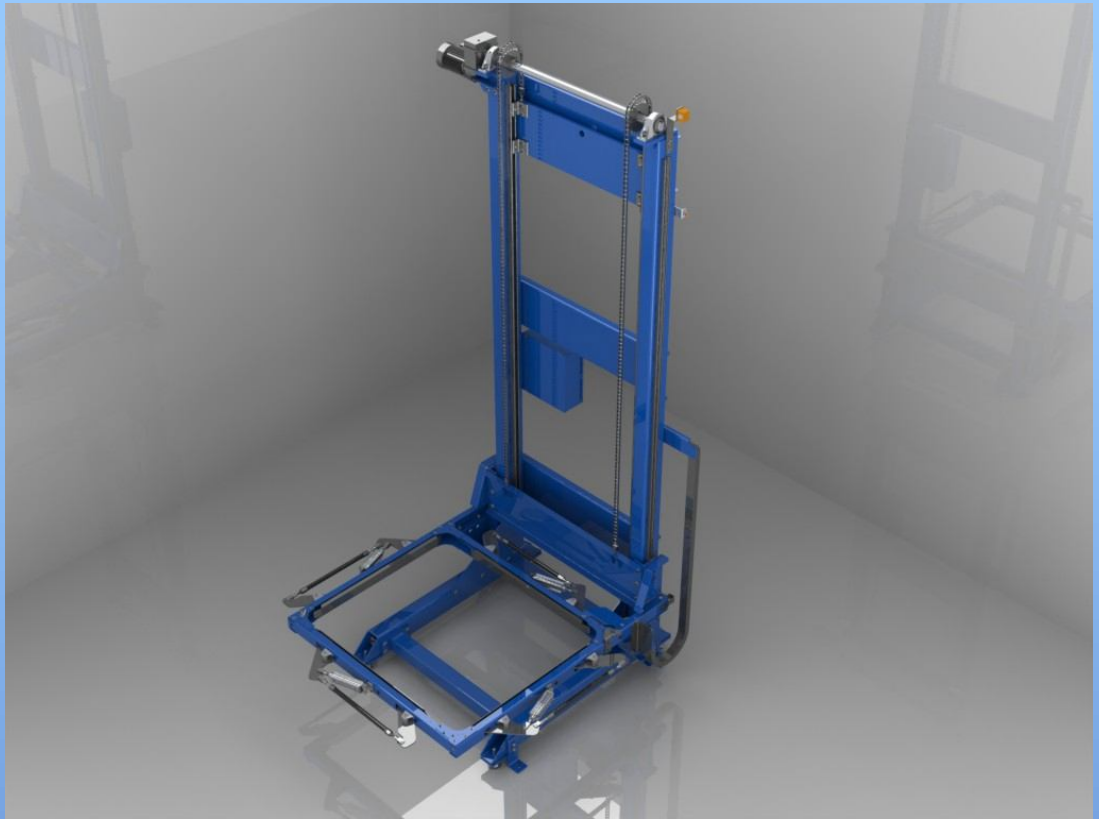




**TEC AUTOMATION, INC.**



# Product Squaring Station



- **1/4" Formed steel and tubular construction**
- **460 VAC power, 3 phase inverter duty motor**
- **#80 Chain for lift drive assembly**
- **Heavy welded steel construction, epoxy painted**
- **18" Standard lowered height with adjustable feet**
- **Rigid support system formed and welded**
- **Hollow shaft gear motor (no need for a chain guard)**
- **Analog laser sensor for infinite positioning and control**
- **PLC controlled with manual functionality**
- **End of limit safety proximity switches**

TEC Automation, Inc. 30 Hickory Springs Industrial Drive

Canton, GA. 30115 (770) 720-3333

[www.tec-automation.com](http://www.tec-automation.com)